

# MP40 Series

## 40 Watt Open Frame Medical Power Supply

# PHASIUM

BY MEGMEET

## Medical Power Specialists



Open-frame medical AC/DC adapter for up to 40 watts. This reliable converter meets all medical compliance requirements including 4th Edition EMC and Level VI efficiency. Available in single output DC voltages from 12V ~ 24V.

### Key Features

- Medical IEC60601-1 Safety Approval
- Small 2" x 3" x 0.9" Package
- 12V to 24V Single Output
- High Efficiency—to 93%
- Class I or Class II Construction
- Medical (BF) Approvals For Class I
- Compliance to EN55011 / FCC Part 15J Class B Emissions
- 3 Year Warranty



Medical Monitor



POS System



Industrial Control



Ultrasound

# PHASIUM

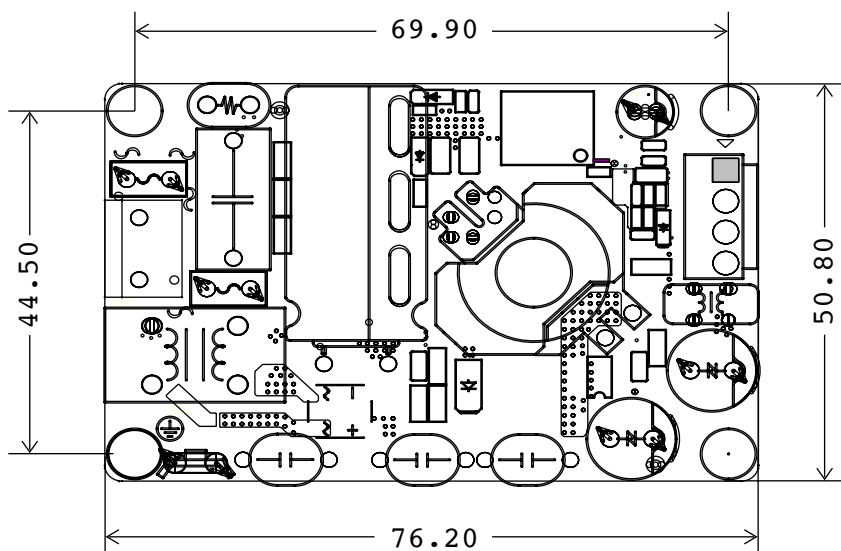
BY MEGMEET

POWER@PHASIUMPOWER.COM

Models	Output Voltage	Output Current	Ripple & Noise (Max)	Total Regulation
MP40-12	12V	3.3A	120mV	±3.0%
MP40-15	15V	2.7A	150mV	±3.0%
MP40-18	18V	2.2A	180mV	±3.0%
MP40-24	24V	1.7A	240mV	±3.0%

Technical Highlights			
Input Voltage	80-264 VAC (Universal)	Efficiency	88%/92% min at 115/230 VAC, full load
Leakage Current	<100µA @ 264VAC	Operating Temperature	-10°C ~ +50°C
Output Voltage	See table above	Protection	OCP / OVP / SC / Over Temp
Line Regulation	±0.5%	Isolation	Input to Output: 4000 VAC, 2x MOPP Input to Ground (Class I): 1500 VACC, 1x MOPP Output to Ground (Class I): 1500 VACC, 1x MOPP
Load Regulation	±2.0% For Main Output	MTBF	200K Hours, Mil-217F at 25 °C, full load
Outline dimension	2" x 3" x 0.9"	Weight	65g

Note: Product specifications are subject to change without prior notice.



AC Input		DC Output	
JST P/N: B2P3 VH (LF)(SN) Mates With: JST VHR-3N		JST P/N: B4P-VH (LF)(SN) Mates With: JST VHR-4N	
Pin 1	Neutral	Pin 1 , 2	Output VDC
Pin 3	Line	Pin 3 , 4	Return