

MP05004 Series

150 Watt Medical
Power Supply

PHASIUM

BY MEGMEET

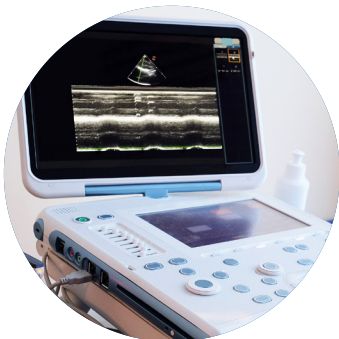
Medical Power Specialists



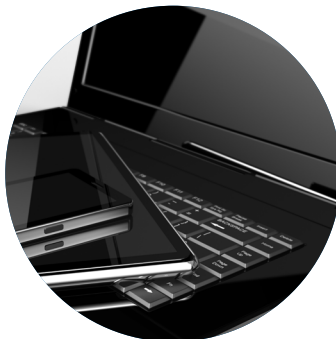
Ideal for mobile devices, the **MP05004** is designed to run on nominal 12V power found in Auto, Aircraft and portable power packs. Geared toward Oxygen Concentrators, Patient Monitors, and other applications designed to run continuously.

Key Features

- Medical 60601-1 Safety Approvals
- Small 5.80 x 2.87 x 1.19" Footprint
- 12V Input Range (11.5-16.0VDC)
- IPX1 Rated Enclosure
- High Power Density - 7.3W/in³
- EN55011 / FCC Part 15J Class B Emissions
- 3 Year Warranty



Ultrasound



Laptop



Oxygen Concentrator



Defibrillator

PHASIUM
BY MEGMEET

POWER@PHASIUMPOWER.COM

Models	Main Output Voltage	Maximum Current	Ripple & Noise (Max)	Max Total Regulation
MP05004	26V	5.7A	260mV	±5%

* Designate DC Output Connector by replacing "y" with the following:

"D" for 8 Pin DIN Connector

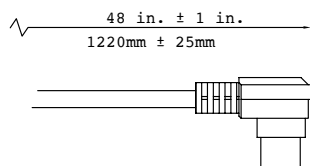
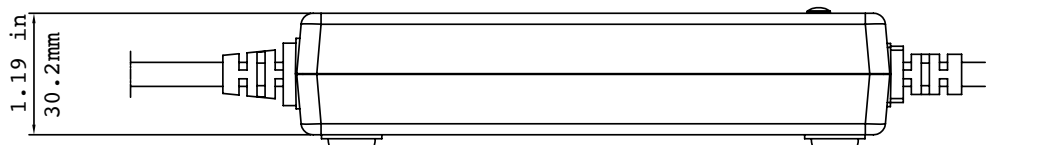
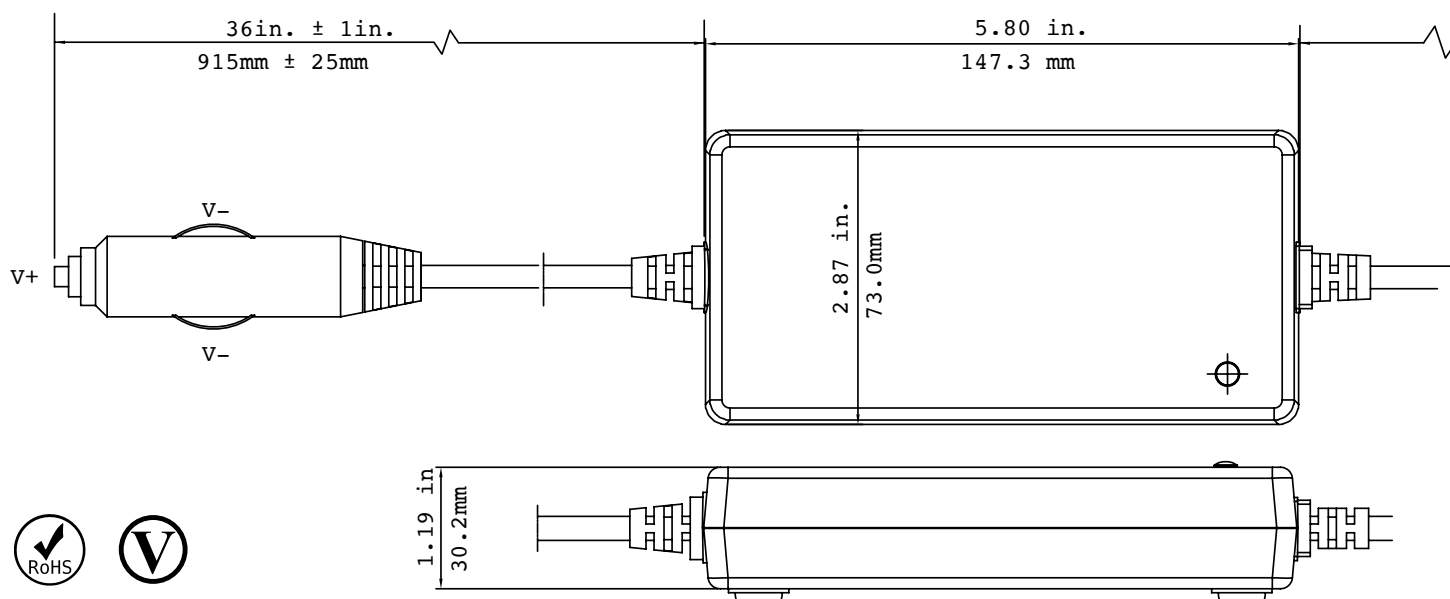
"M" for Molex Connector Part Number 39-01-2060 or equivalent

"K" for KYCON KP P-4P Locking Connector

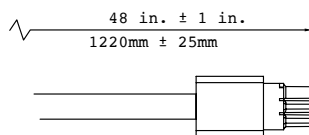
Technical Highlights

Input Voltage	11.5 - 16.0 VDC	Efficiency	90% typical
Output Voltage	See Table	Operating Temperature	-15°C ~ +40°C
Line Regulation	±0.5%	Isolation	Non-Isolated
Load Regulation	±5%	MTBF	100K Hours, MIL-217F at 25°C, full load

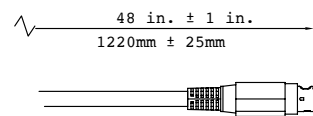
Note: Product specifications are subject to change without prior notice.



DIN-8
Pins 1, 2, 4V 6
Pins 3, 5, 7V 8



MOLEX 6&T (39-01-2060)
mates with 5559 plug
5566 / 5569 headers
Pins 1, 4, 5V
Pins 2, 3, Return



KYCON KP-4P
Pins 1, 2+ V
Pins 3, 4- V

