

MANGO25S Series

25 Watt Medical Desktop
Power Supply

PHASIUM

BY MEGMEET

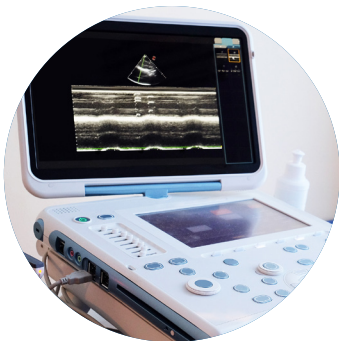
Medical Power Specialists



PHASIUM adapters are the supply chain solution for reliability and low cost. The **MANGO25S** wall-mount medical adapters deliver 25 watts (continuous) of DC power to your medical or IT device. Available in international plug styles, the new **MANGO25S** series meets all Medical and Commercial compliance requirements including 4th Edition EMC and Level VI Efficiency.

Key Features

- Medical 60601-1 Safety Approvals
- CEC 2008 / ErP2 / EISA 2007 Compliant
- High Efficiency - Level VI
- EN55011 / FCC Part 15J Class B Emissions
- Class II Construction
- Small 3.27 x 1.69 x 1.27" Size
- AC Plug Options: US, UK, AUS or EU Wall Mount Packages
- 3 Year Warranty



Ultrasound



CPAP



Patient Monitor



Defibrillator

PHASIUM
BY MEGMEET

POWER@PHASIUMPOWER.COM

Models	Output Voltage	Output Current	Ripple & Noise (Max)	Max Total Regulation
MANGO025S-9xy	9V	2.7A	90mV	±5%
MANGO025S-12xy	12V	2.1A	120mV	±5%
MANGO025S-15xy	15V	1.7A	150mV	±5%
MANGO025S-19xy	19V	1.3A	190mV	±5%
MANGO025S-24xy	24V	1.1A	240mV	±5%
MANGO025S-28xy	28V	0.9A	280mV	±5%

Designate Wall Mount Package by replacing "x" with one of the following:

US = US Wall Mount

AU = AUS Wall Mount

UK = UK Wall Mount

EU = EU Wall Mount

Designate DC Connector by replacing "y" with "U" for Mini USB or "B" for Barrel Jack Connector. (5.5 x 2.1 x 11mm)

Technical Highlights

Input Voltage	90-264 VAC (Universal)	Efficiency	80-84% typical at 115/230 VAC, full load
Leakage Current	<100 µA @ 264VAC / 60Hz	Operating Temperature	0°C ~ +40°C
Output Voltage	See table above	Protection	2x MOPP (input to output)
Line Regulation	±1.0%	Isolation	Input to Output 4000 VAC
Load Regulation	±5%	MTBF	200K Hours, Mil-217F at 25 °C, full load

Note: Product specifications are subject to change without prior notice.

Wall Mount Package and Connector Options

